



# **PONTE VEDRA BEACH RESTORATION**

PHASE 1 MUNICIPAL SERVICE TAXING UNIT

Community Meetings

August 25 and September 5, 2018

# Meeting Agenda



2

- Introductions
- Beach Restoration Vision
- Background
- Strategic Path
- Phase 1 MSTU
- Timeline
- Questions and Discussion

# Vision



3

A full beach nourishment of the entire length of Ponte Vedra Beach in the form of an engineered beach with a vegetated dune system, which would provide increased protection from storm damage to private property, recreation opportunities and environmental habitat.

# Background



4

- Ponte Vedra Beach has experienced long-term beach erosion, and will most likely continue to experience beach erosion
  - ▣ Olsen and Associates predicted a loss of 2.4M cubic yards of sand lost since 1986
  - ▣ The same report cited a loss of 620,000 cubic yards during Hurricanes Matthew and Irma
- The current conditions leave upland infrastructure potentially vulnerable to future storm damage.

# Strategic Path



5

- A substantial portion of the project cost will need to come from local funding.
- A Municipal Service Taxing Unit (MSTU) or Municipal Service Benefit Unit (MSBU) will be needed to facilitate the property owners' contribution to the local funding. (Phase 2)
- State and Federal funding will be sought on a parallel path.
- A fully developed project proposal will be needed for the Community and the Board of County Commissioners (Commission) to consider an MSTU or MSBU. This may also help the County to secure funding from other sources.
- To fully develop a proposal, approximately \$1.2M will be needed to perform the necessary project development and preliminary design work--including permitting an offshore source of sand close to Ponte Vedra Beach. (Phase 1)



# Phase 1 Work

6

- Permit Sand Source
  - ▣ Find and evaluate sand sources.
  - ▣ Perform the necessary hydrographic, topographic, geotechnical, geophysical, environmental and archaeological studies to apply for permits and a borrow site lease.
- Project development
  - ▣ Define the extent and scale of a beach nourishment project.
  - ▣ Determine whether the goal should be a one-time project or a repeatable program.
- Design the beach template
- Analyze the benefits from the project and recommend the appropriate assessment mechanism for Phase 2.

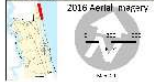
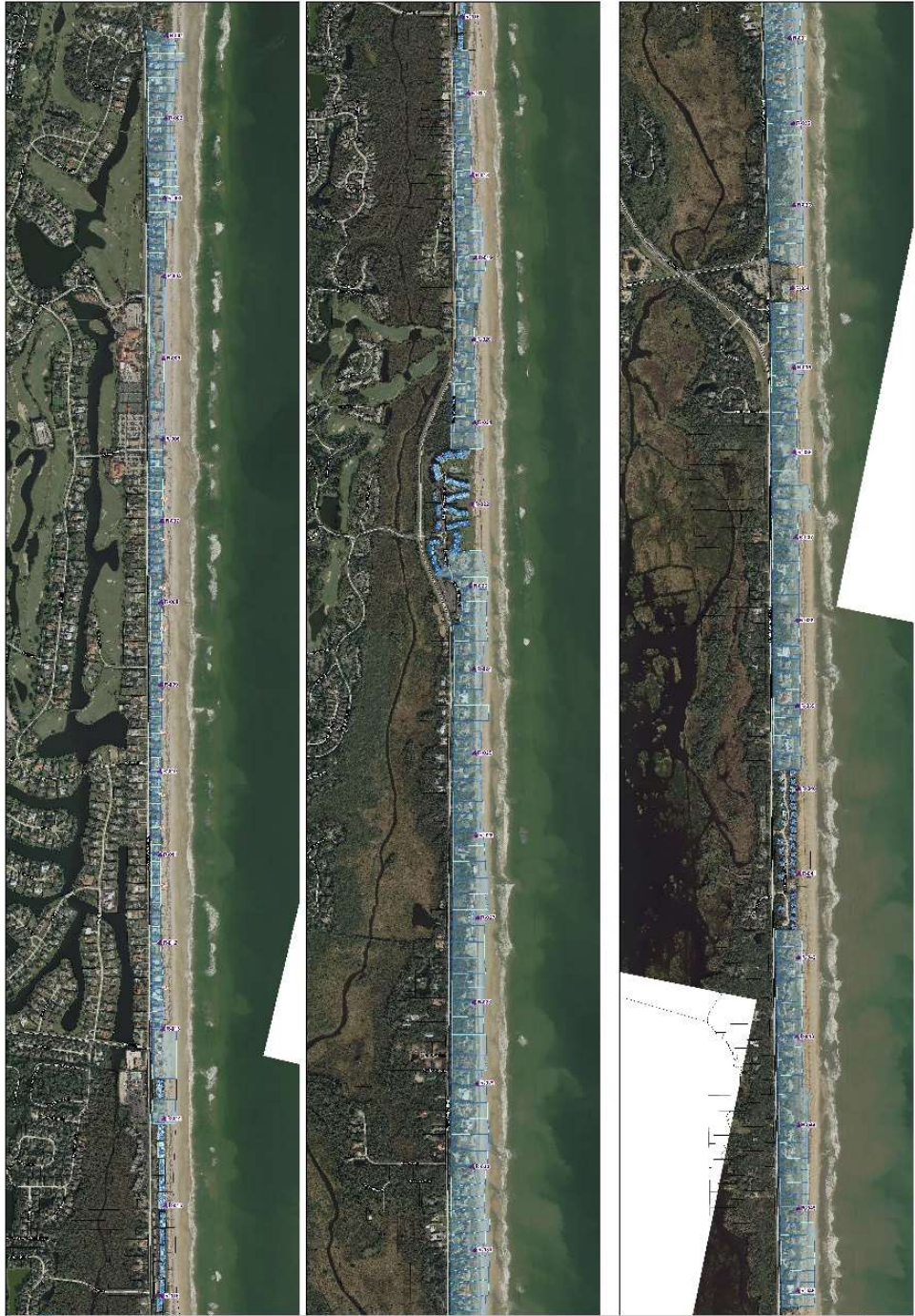
# Phase 1 Municipal Service Taxing Unit



7

- Speed and simplicity
  - Properties under the most immediate threat of storm surge damage
  - All private tax parcels east of Ponte Vedra Boulevard
  - Phase 2 may be a different benefit area.
- MSTU millage applied to the taxable value of parcels
  - Estimate of 0.6 mils
  - Two year assessment
- The County has applied for FDEP grant to reduce these costs





Ponte Vedra Beach Restoration

Phase 1 MSTU Area

Note: The portions of beach shown shaded will be included in the Phase 1 MSTU. Portions not shaded are not included in the MSTU.

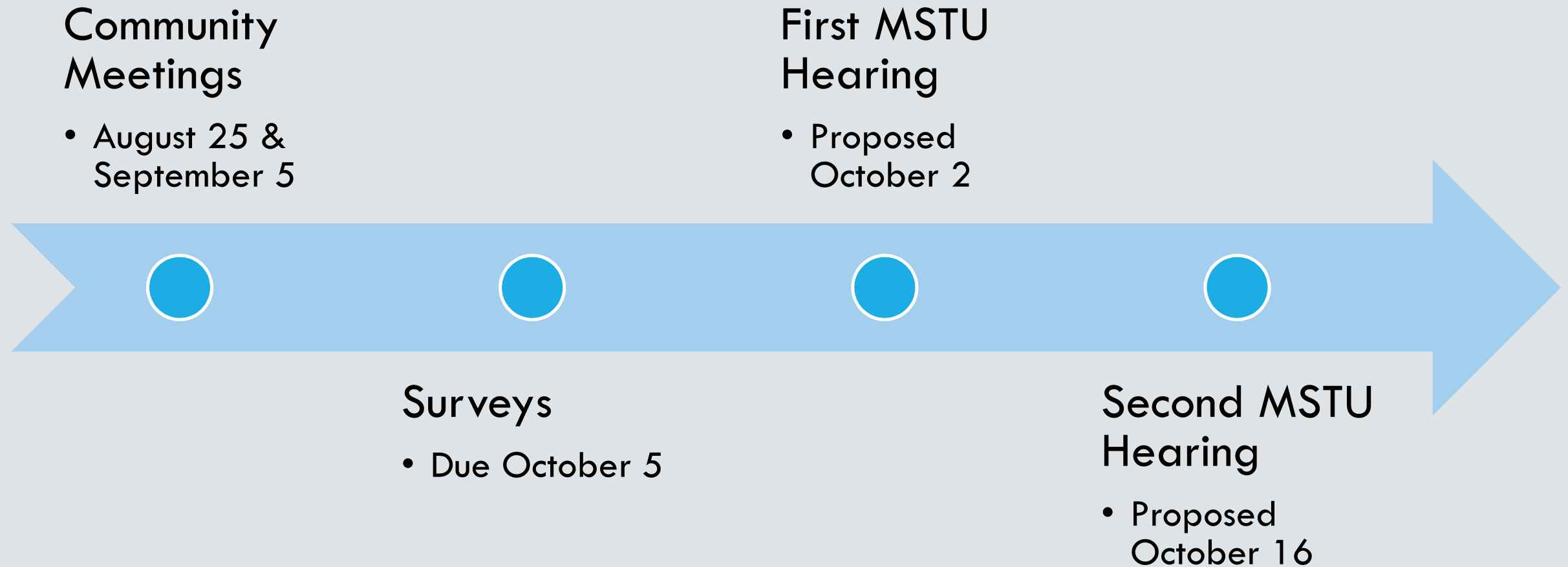
Public Works Department  
205-0794







# Phase 1 Timeline





# Tentative Overall Timeline

